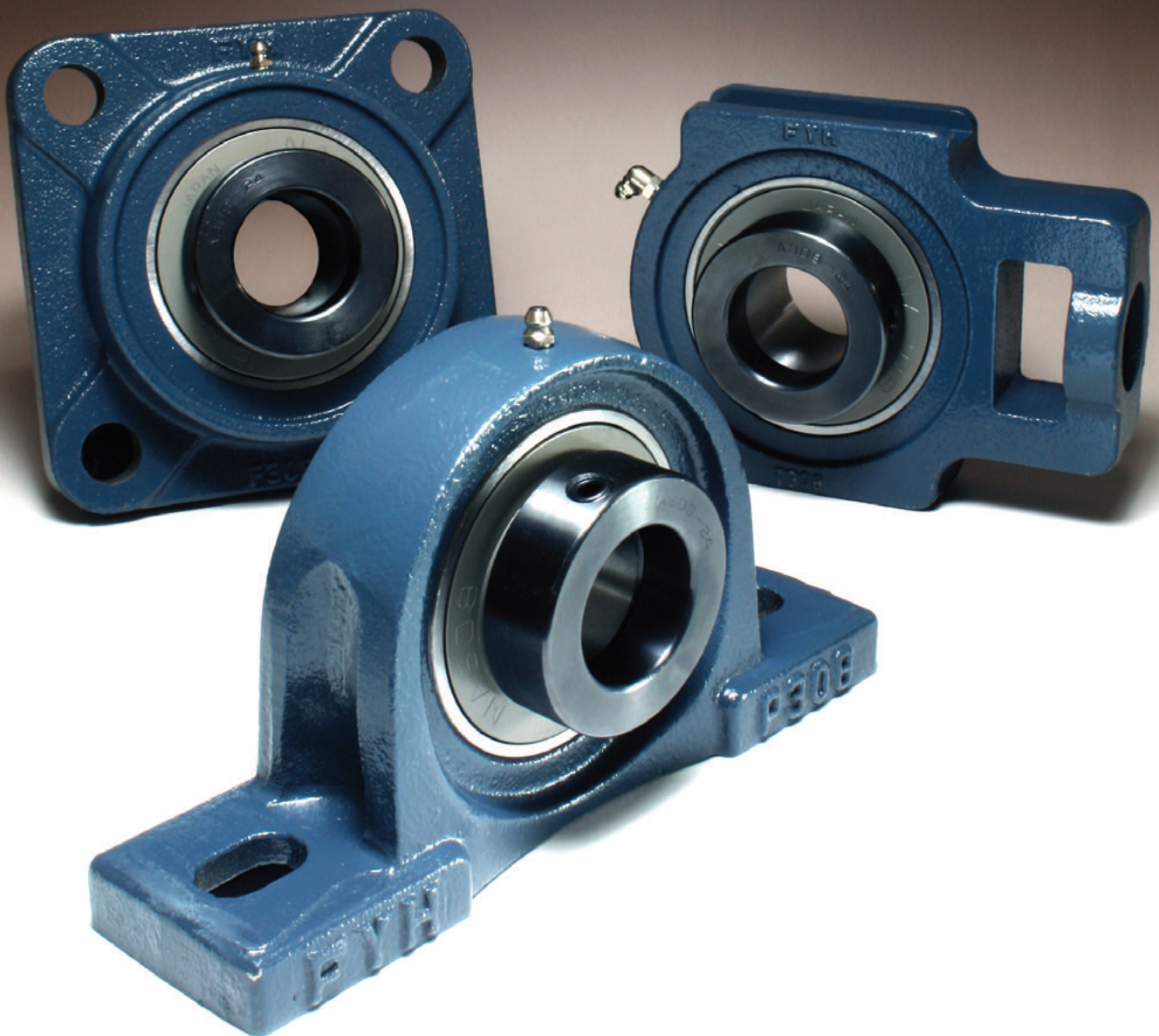




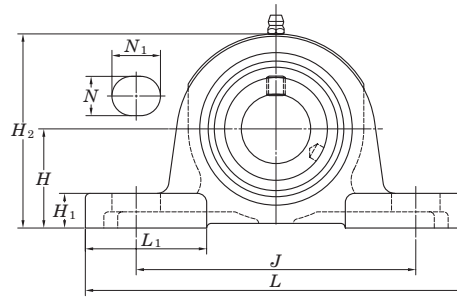
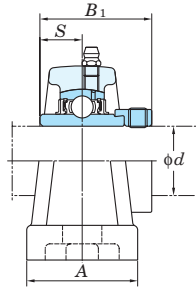
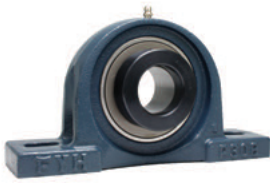
***HEAVY DUTY UNITS
with Eccentric Locking Collars***



NAP3E

Cylindrical bore
(with eccentric locking collar)

d 1 3/16 ~ 2 15/16 inch



Shaft Dia. inch d	Dimensions inch mm											Bolt Size inch mm	Unit No.	Housing No.	Bearing No.	Mass kg
	H	L	A	J	N	N_1	H_1	H_2	L_1	B_1	S					
1 3/16	1 7/8 47.6	7 3/32 180	1 31/32 50	5 1/2 140	2 1/32 17	2 5/32 20	9/16 14.6	3 21/32 92.6	2 3/32 53	1.969 50	0.689 17.5	1/2 M14	NAP306-19E	P306E	NA306-19	2.3
1 7/16	2 1/8 54	8 9/32 210	2 7/32 56	6 5/16 160	2 1/32 17	3 1/32 25	2 1/32 17	4 1/8 105	2 9/16 65	2.031 51.6	0.720 18.3	1/2 M14	NAP307-23E	P307E	NA307-23	3.1
1 1/2	2 3/8 60.3	8 21/32 220	2 3/8 60	6 11/16 170	2 1/32 17	1 1/16 27	3/4 19.3	4 21/32 118.3	2 9/16 65	2.248 57.1	0.780 19.8	1/2 M14	NAP308-24E	P308E	NA308-24	4.1
1 11/16	2 5/8 66.7	9 21/32 245	2 5/8 67	7 15/32 190	2 5/32 20	1 3/16 30	1 3/16 20.7	5 3/16 131.7	2 15/16 75	2.311 58.7	0.780 19.8	5/8 M16	NAP309-27E	P309E	NA309-27	5.1
1 15/16	2 13/16 71.4	10 13/16 275	2 15/16 75	8 11/32 212	2 5/32 20	1 3/8 35	1 3/8 20.4	5 11/16 144.4	3 15/32 88	2.622 66.6	0.969 24.6	5/8 M16	NAP310-31E	P310E	NA310-31	7
2 3/16	3 1/16 77.8	12 7/32 310	3 5/32 80	9 9/32 236	2 5/32 20	1 1/2 38	1 1/2 24.8	6 1/8 155.8	3 17/32 90	2.874 73	1.094 27.8	5/8 M16	NAP311-35E	P311E	NA311-35	8.5
2 7/16	3 5/16 84.1	13 330	3 11/32 85	9 27/32 250	3 1/32 25	1 1/2 38	1 3/32 28.1	6 17/32 166.1	4 1/16 103	3.126 79.4	1.220 31	3/4 M20	NAP312-39E	P312E	NA312-39	10.1
2 11/16	3 13/16 96.8	14 3/16 360	3 17/32 90	11 1/32 280	1 1/16 27	1 9/16 40	1 7/16 36.8	7 13/32 187.8	4 11/32 110	3.626 92.1	1.343 34.1	7/8 M22	NAP314-43E	P314E	NA314-43	13.8
2 15/16	4 1/8 104.8	14 31/32 380	3 15/16 100	11 13/32 290	1 1/16 27	1 23/32 44	1 9/16 39.8	7 31/32 202.8	4 7/32 107	3.937 100	1.469 37.3	7/8 M22	NAP315-47E	P315E	NA315-47	16.8

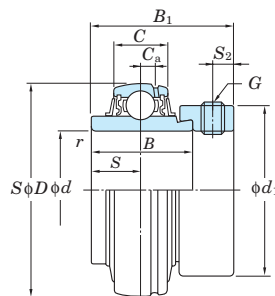
Remark A-1/4-28UNF..... 306~308
A-PT1/8..... 309~315

Drop in replacements for RAO units and GN inserts.

NA3

Cylindrical bore
(with eccentric locking collar)

d 1 3/16 ~ 2 15/16 inch



Shaft Dia inch d	Dimensions inch mm					Basic Load Ratings kN		Factor f_0	Bearing No.	Dimensions inch mm				Set Screw Brg. Bore inch	Mass kg
	D	B	B_1	C	r (min.)	C_r	C_{0r}			C_a	S	S_2	d_1		
1 3/16	2.835 72	1.437 36.5	1.969 50	0.945 24	0.043 1.1	26.7	15.0	13.3	NA306-19	0.256 6.5	0.689 17.5	0.268 6.8	1.937 49.2	5/16-24UNF	0.66
1 7/16	3.150 80	1.500 38.1	2.031 51.6	1.024 26	0.059 1.5	33.4	19.3	13.2	NA307-23	0.295 7.5	0.720 18.3	0.268 6.8	2.185 55.5	5/16-24UNF	0.81
1 1/2	3.543 90	1.626 41.3	2.248 57.1	1.102 28	0.059 1.5	40.7	24.0	13.2	NA308-24	0.315 8	0.780 19.8	0.315 8	2.500 63.5	3/8-24UNF	1.19
1 11/16	3.937 100	1.689 42.9	2.311 58.7	1.181 30	0.059 1.5	48.9	29.5	13.3	NA309-27	0.335 8.5	0.780 19.8	0.315 8	2.748 69.8	3/8-24UNF	1.47
1 15/16	4.331 110	1.937 49.2	2.622 66.6	1.260 32	0.079 2	62.0	38.3	13.2	NA310-31	0.354 9	0.969 24.6	0.343 8.7	3.000 76.2	3/8-24UNF	1.95
2 3/16	4.724 120	2.189 55.6	2.874 73	1.339 34	0.079 2	71.6	45.0	13.2	NA311-35	0.394 10	1.094 27.8	0.343 8.7	3.248 82.5	3/8-24UNF	2.2
2 7/16	5.118 130	2.437 61.9	3.126 79.4	1.417 36	0.083 2.1	81.9	52.2	13.2	NA312-39	0.453 11.5	1.220 31	0.343 8.7	3.500 88.9	3/8-24UNF	3
2 11/16	5.906 150	2.689 68.3	3.626 92.1	1.575 40	0.083 2.1	104	68.2	13.2	NA314-43	0.492 12.5	1.343 34.1	0.469 11.9	4.000 101.6	1/2-20UNF	4.7
2 15/16	6.299 160	2.937 74.6	3.937 100	1.654 42	0.083 2.1	113	77.2	13.2	NA315-47	0.571 14.5	1.469 37.3	0.500 12.7	4.437 112.7	5/8-18UNF	5.8